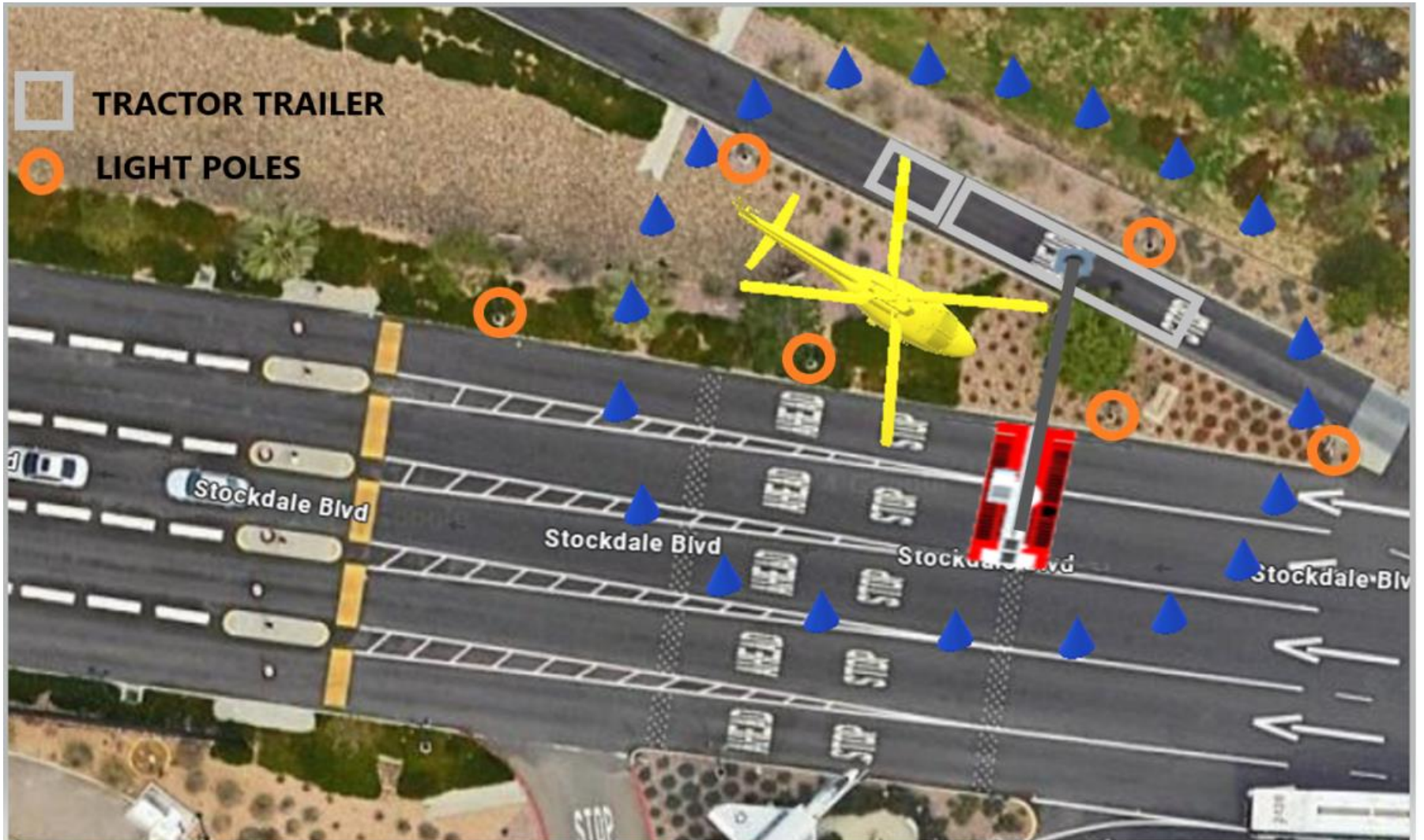




SH60 NASNI Lift  
Confirmation Brief  
11 January 2025  
Khaki: EOC Ellorin  
LPO: EO1 Zimmergarger  
Crew Leader: EO2 Villalon



# Orientation





# Situation



## Narrative:

ACB-1 Crane Crew will utilize the 65T crane to lift and place an SH60 Helicopter onto pedestal located on the right side of the NASNI main gate entrance.

## 5Ws:

- Who: All of ACB-1 Crane Crew
- What: Static Display / Memorial Statue of SH60 Helicopter
- When: Mission Date 11 January 25
- Where: Naval Air Station North Island
- Why: Requested support from NASNI due to our crane capabilities

## Equipment:

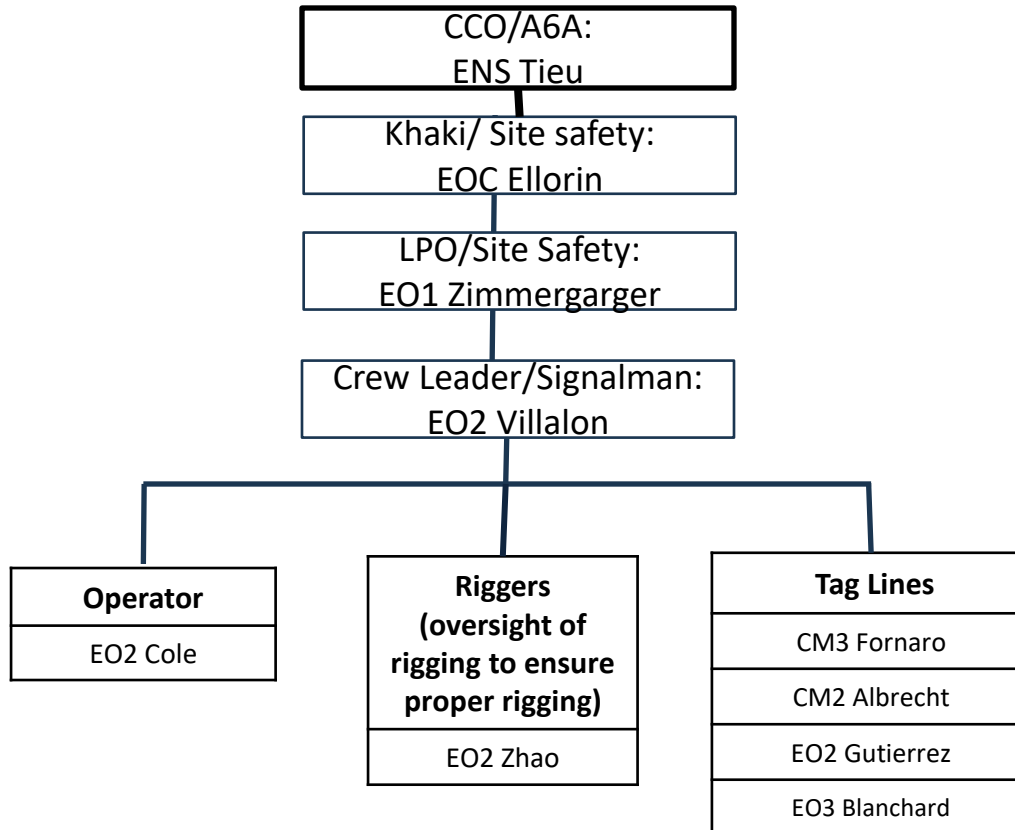
- 15 PAX Van
- 2 LSSV's
- 65T Crane

## Movements:

- 10 Jan: Inspect and stage equipment needed for the lift and place into LSSV for storage.
- 10 Jan: Site inspection at NASNI
- 11 Jan: Travel to NASNI where our crane is located at
- 11 Jan: Travel with crane to NASNI main gate



# Task Organization





# Mission



- On the 10<sup>th</sup>, we will inspect and prepare all needed gear and misc. equipment for the lift and stage them here at ACB-1 in the LSSV. Crane crew will then take the 15 PAX van to do a site survey of the lift location at NASNI and inspect the 65T.
- On the 11<sup>th</sup>, we will head over to NASNI, where our 65T crane is staged, at 0730 to begin ODCL, pre-lift briefings, inspections, and move the crane into position.
  - During the pre-lift brief EO2 Zhao will establish contact with the rigging crew informing them that the load will not move until both she and Jeff Coskey have inspected the gear and confirmed that it is correct.





# Scheme and Maneuver

## 11 January 2025



- 0700 Muster at Alfa Yard/ R-1 Checks
- 0715 Step-Off
- 0730 ETA at NASNI crane staging area
- 0800 Complete ODCL and pre-lift actions
- 0805 Step off from staging area and travel to lift location
- 0830 ETA at NASNI main gate; begin setup
- 0900 Safety brief with crane crew and Rigging team supplied by Jeff Coskey
- 0930 Crew will be set up and ready to begin the lift when the Helicopter shows up

### **Order of March:**

- LSSV (lead vehicle)  
Driver: EO2 Gutierrez  
A-Driver: EOC Ellorin
- 65T Crane  
Operator: EO2 Cole
- 15pax van (chase)  
Driver: EO1 Zimmergarger  
Mechanic/ A-Driver: CM2 Albrecht  
PAX: The rest of crane crew

### **GO/ NO GO:**

- Severe Weather Conditions
- Severe Equipment Failure/ Safety Concerns
- Personnel Accountability
- Any unsatisfactory condition indicated with an asterisk on ODCL
- Specialized rigging gear is not provided
- Site safety can't be maintained
- Site can't be blocked off from traffic
- Plan for attaching helicopter to pedestal isn't known
- No action on man-lift to watch the alignment and secure nuts on bolts from pedestal.

### **WAY-FORWARD:**

- Severe Weather Warnings: Monitor Weather, no foul weather expected or common during this lift. Temperature is expected to be cool.
- Severe Equipment Failure/ Safety: Crew Leader will make a determination depending on the safety concerns to personnel safety.
- Personnel will muster for accountability at 0700 in Alfa Co. Transportation Yard.
- If delay is severe enough back up day for lift execution will be the 18<sup>th</sup> of January.



# Execution



- At 0930 crew will be fully set up and ready to begin lift at the front gate.
- Crane will be picking up the SH60 from a Tractor trailer entrance lane where the center of the load will be 45 feet from the center of the rotate base of the crane.
- Crane will then rotate to the operators left and boom up to reduce our radius to 37 feet where we will be centered over the pedestal.
- After the SH60 is set onto the pedestal we will initiate a no load holding time of 5 minutes to ensure load doesn't move, shift, or fall prior to SH60 being secured with nuts and washers to pedestal.
- NHAHS with man-lift will be there to watch the alignment of the bolt holes and install nuts and washers once SH60 is in place.



# Admin & Logistics



## Logistics:

- **Uniform:** Type 3s, Hardhat, Gloves
- Tag lines
- High visibility vests
- Traffic cones
- Caution tape
- **Communications:** Sonetics

## SH60 lift POC's:

President NHAHS: Bill Personius (858) 449-1726

Lead rigging SME: Jeff Coskey (619) 913-1455

Watch Commander NASNI: MACS Rodriguez (619) 545-6124

## Visuals:



## ACB-1 POC's:

CCO/A6: LT Tessero (386) 405-2560

CCO/A6A: ENS Tieu (206) 397-6734

A3: EOC Cofer (619) 306-9940

ACCO/LCPO: EOC Ellorin (619) 791-8801

LPO/ Site Safety: EO1 Zimmergarger (228) 224-0230

Crane Supervisor/ Crew Leader: EO2 Villalon (619) 636-1772





# P-307 References



## 14.15 Rigging Practices.

- Loads shall be rigged so that the load cannot fall out of the rigging. Frapping shall be used where necessary to ensure the load does not fall out of the rigging. When using slings in a sweeping or basket configuration under a load, the load should be balanced and the slings should be secured with frapping to prevent inadvertent shifting or movement of the load.
- Ends of unused slings/sling legs shall be secured against inadvertent contact when lifting a load.
- When handling taglines, always face the load, keep hands and feet clear, and do not wrap the tagline around the hands, arms, or any other part of the body.

## 14.16 General Rigging Safety.

Loads shall not be suspended or moved over personnel. When it is necessary, personnel may reach under suspended loads for a short duration to install/remove coverings, make attachments, position supports, etc., provided the load is not suspended over the employee's head and the only body parts under the load are the arms. Any reaching under the load shall be approved by the lead rigger. The load shall not be in motion while the employee is reaching under the load. Activities shall minimize the occurrence of reaching under suspended loads. Except for personnel engaged in rigging/unrigging the load or engaged in attaching/removing the load to/from a structure or another component, personnel shall be kept clear of the fall zone (i.e., the area in which it is reasonably foreseeable that partially or completely suspended materials could fall in the event of an accident).



# Policies



- Follow all guidance from P-307
- Follow all guidance from the Command Instruction 11262.2D
- Communications: Primary means of communication will be Sonetics



# Respectfully Request Permission to execute SH-60 Crane Lift

