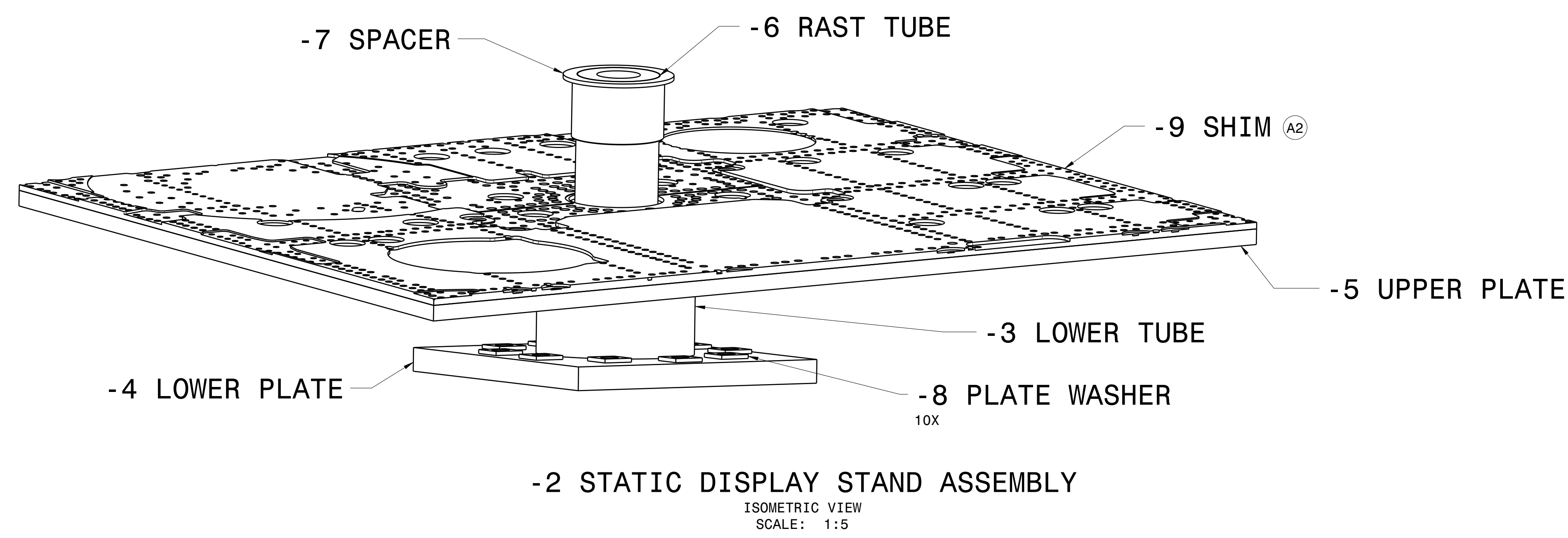


NOTES:

- 1. THIS DRAWING WAS DEVELOPED TO THE FOLLOWING STANDARDS/SPECIFICATIONS:
ASME Y14.100-2017 ENGINEERING DRAWING PRACTICES
ASME Y14.5-2018 DIMENSIONING AND TOLERANCING
ASME Y14.41-2019 DIGITAL PRODUCT DEFINITION
MIL-STD-31000B TECHNICAL DATA PACKAGE
- 2. PART GEOMETRY IS DEFINED BY SOLID MODEL 22E2946-2_A.STP IN CONJUNCTION WITH THIS DRAWING. REFER TO SOLID MODEL FOR ANY DIMENSIONAL DATA THAT IS NOT SPECIFIED IN THE DRAWING SHEETS. UNLESS OTHERWISE SPECIFIED, A TOLERANCE OF ± .030 INCHES AND ANGULAR TOLERANCE OF ± .5 DEGREES APPLIES TO ALL DIMENSIONS THAT ORIGINATE FROM SOLID MODEL.
- 3. CAD MAINTAINED. CHANGES SHALL BE INCORPORATED BY THE DESIGN ACTIVITY.
- 4. PART MARKING SHALL BE IN ACCORDANCE WITH MIL-STD-130N-2012.
- 5. UNLESS OTHERWISE SPECIFIED, ALL FEATURES OF THE PART ARE DEFINED TO NOMINAL CONDITIONS.
- 6. PARTS SHALL BE PACKAGED AND PRESERVED IN ACCORDANCE WITH MIL-STD-2073.
- 7. BREAK ALL SHARP EDGES.

- 8. SURFACE TREATMENT (EXCEPT WHERE NOTED OTHERWISE):
ONE COAT EPOXY PRIMER, MIL-PRF-23377, TYPE I, IAW MIL-STD-7179.
ONE COAT POLYURETHANE COATING, MIL-PRF-85285, TYPE IV, CLASS H, COLOR NO. 36320 IAW MIL-STD-7179 AND FED-STD-595.
- 9. MARKED FASTENERS ARE NOT PRE-DRILLED ON -5 UPPER PLATE AND -9 SHIM AND SHALL BE MATCH DRILLED AT INSTALLATION TO EXISTING HOLE LOCATIONS ON THE AIRCRAFT. HOLE SIZE SHALL BE .250-.255 INCH DIAMETER.
- 10. NAS6604 BOLTS ARE INSTALLED AT MARKED FASTENER LOCATIONS. FASTENER GRIP LENGTH TO BE DETERMINED AT INSTALLATION.
- 11. TORQUE MS21044C4 NUTS TO 100 ±5 IN-LB.
- 12. -6 RAST TUBE POSITION SHALL BE LOCATED DURING INSTALL ON AIRCRAFT. TUBE SHALL BE CENTERED IN AIRCRAFT RAST FITTING AFTER -5 UPPER PLATE HAS BEEN LOCATED ON THE AIRCRAFT. LOCATION DIMENSIONS PROVIDED FOR REFERENCE ONLY.
- 13. -7 SPACER SHALL BE INSTALLED SO THAT UPPER SURFACE IS EVEN WITH UPPER SURFACE OF -6 RAST TUBE (± 0.100 INCHES). A GAP BETWEEN THE LOWER SURFACE OF THE SPACER FLANGE AND THE AIRCRAFT STRUCTURE IS NORMAL.
- 14. NOTE DELETED.
- 15. ALL WELDS SHALL BE IN ACCORDANCE WITH AWS D1.1/D1.1M:2020.
- 16. DO NOT PAINT OUTER DIAMETER OF -6 RAST TUBE.
- 17. DO NOT PAINT INNER DIAMETER OF -7 SPACER.
- 18. FAY SURFACE SEAL WITH SEALANT, MIL-PRF-81733, TYPE I IAW MIL-STD-7179.
- 19. WET INSTALL FASTENERS WITH SEALANT, MIL-PRF-81733, TYPE I IAW MIL-STD-7179.

REVISION HISTORY				CHECKED	APPROVED
ZONE	REV	DESCRIPTION			
4C	A1	ADDED NEW PART 22E2946-9 IN PARTS LIST TABLE.			
5C	A2	ADDED NEW PART AND CALLOUT "-9 SHIM" TO ASSEMBLY VIEW.			
8E	A3	DELETED NOTE 14.			
4A	A4	ADDED SHEET 4 TO SHEET TABLE.			
1A	A5	UPDATED SHEET COUNT IN TITLE BLOCK.			
8F	A6	UPDATED NOTE 9 TO CALL OUT "-9 SHIM."			
3A	A7	FINISH TABLE, NOTE 3 - ADDED "ANODIZE (MIL-A-8625, TYP I)"			
8E	A8	ADDED NOTE 18.			
8E	A9	ADDED NOTE 19.			
4B	A10	CHANGED -5 STOCK THICKNESS. WAS 1.250, IS 1.00.			
4C	A11	CHANGED -6 STOCK LENGTH. WAS 8.00, IS 8.50.			



FIND NO.	NO REQ PER ASSY	CAGE	PART OR IDENTIFYING NO.	NOMENCLATURE OR DESCRIPTION	STOCK	MATERIAL	MATERIAL SPEC	FINISH
		148	80205	NAS1149C0432R	WASHER			
		74	80205	MS21044C4	NUT			
		74	80205	NAS6604-XX	BOLT			
(A1)	1	96916	22E2946-9	SHIM	48.0 X 62.0 X 0.50	7075-T7351	AMS 4078	3
	10	96916	22E2946-8	PLATE WASHER	2.00 X 2.00 X 0.25	A36 STEEL PLATE	ASTM A36	
	1	96916	22E2946-7	SPACER	4.00 X 1.00 X 7.00	A106 STEEL PIPE	ASTM A106, GRADE B	
(A11)	1	96916	22E2946-6	RAST TUBE	8.50 X 1.25 X 5.25	A106 STEEL PIPE	ASTM A106, GRADE B	
(A10)	1	96916	22E2946-5	UPPER PLATE	48.0 X 62.0 X 1.00	A36 STEEL PLATE	ASTM A36	
	1	96916	22E2946-4	LOWER PLATE	18.00 X 18.00 X 1.00	A36 STEEL PLATE	ASTM A36	
	1	96916	22E2946-3	LOWER TUBE	9.25 X 0.375 X 10.00	A500 STEEL TUBE	ASTM A500, GRADE C	
	1	96916	22E2946-2	ASSEMBLY, STATIC DISPLAY STAND				2
	1	96916	22E2946-1	INSTL, STATIC DISPLAY STAND				

PARTS LIST

DISTRIBUTION STATEMENT D - DISTRIBUTION AUTHORIZED TO DEPARTMENT OF DEFENSE AND U.S. DOD CONTRACTORS ONLY DUE TO CRITICAL TECHNOLOGY, DETERMINED ON 16 JUNE, 2015. OTHER REQUESTS FOR THIS DOCUMENT SHALL BE REFERRED TO COMMANDING OFFICER, FLEET READINESS CENTER EAST, MARINE CORPS AIR STATION, CHERRY POINT, N.C. 28533

UNLESS OTHERWISE SPECIFIED DIMENSIONS ARE IN INCHES TOLERANCES ON DECIMALS FRACTIONS ANGLES .XX" ±.03 .XXX" ±.010 ~ ±.5°

CAD MAINTAINED. CHANGES SHALL BE INCORPORATED BY THE DESIGN ACTIVITY

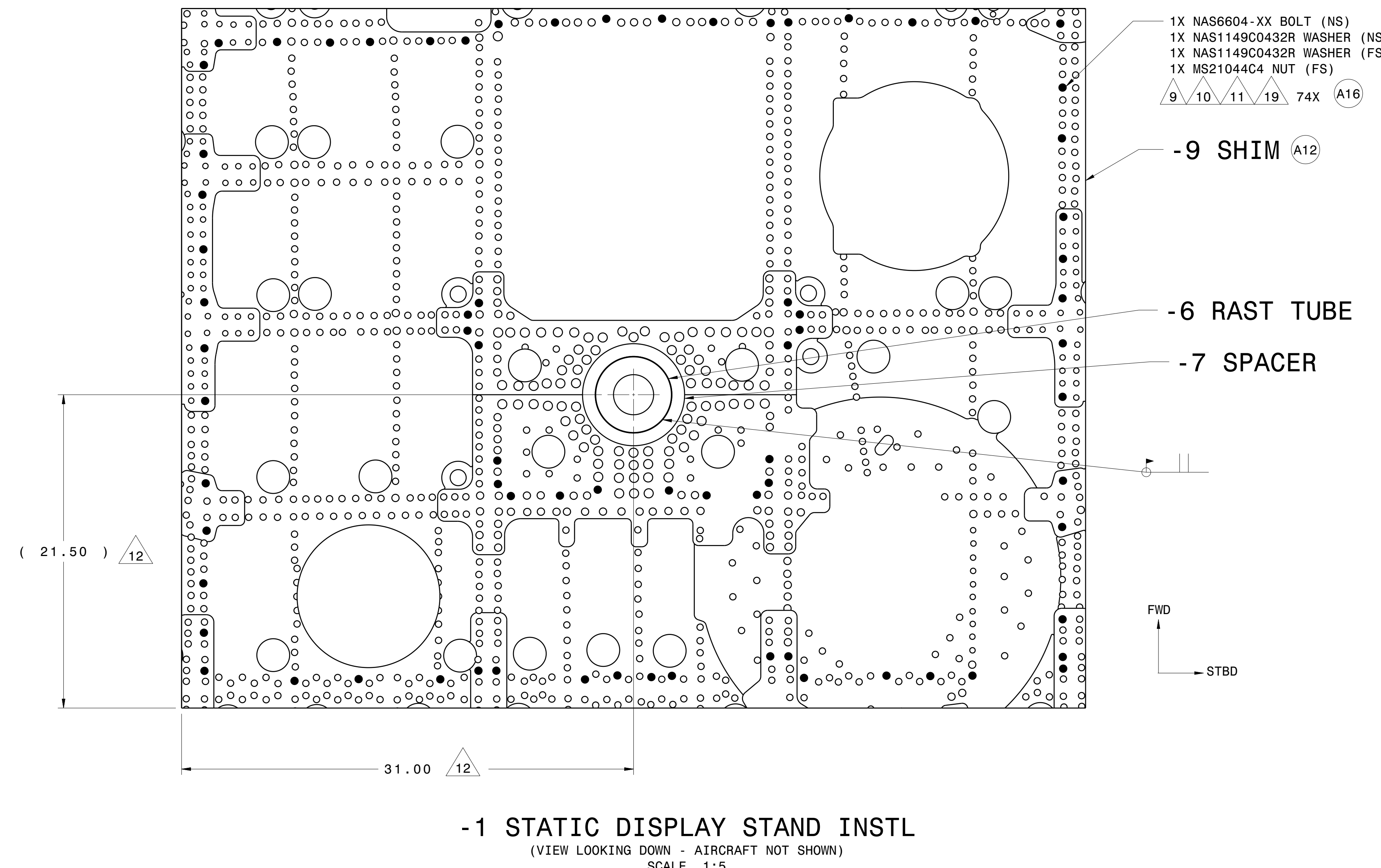
NO.	FINISH TABLE	DRAWN	A. MCCALLISTER	11-8-23	FLEET READINESS CENTER - EAST U.S. MARINE CORPS AIR STATION CHERRY POINT, NC
1	MACHINE FINISH 125J	CHECKED	K. MURPHY	11-8-23	
2	SEE FLAG NOTE 8	ENGINEER			
3	ANODIZE (MIL-A-8625, TYP I)	ENGINEER			
4		APPROVED	W. THORNTON	11-8-23	
5		APPROVED			

THIRD ANGLE PROJECTION

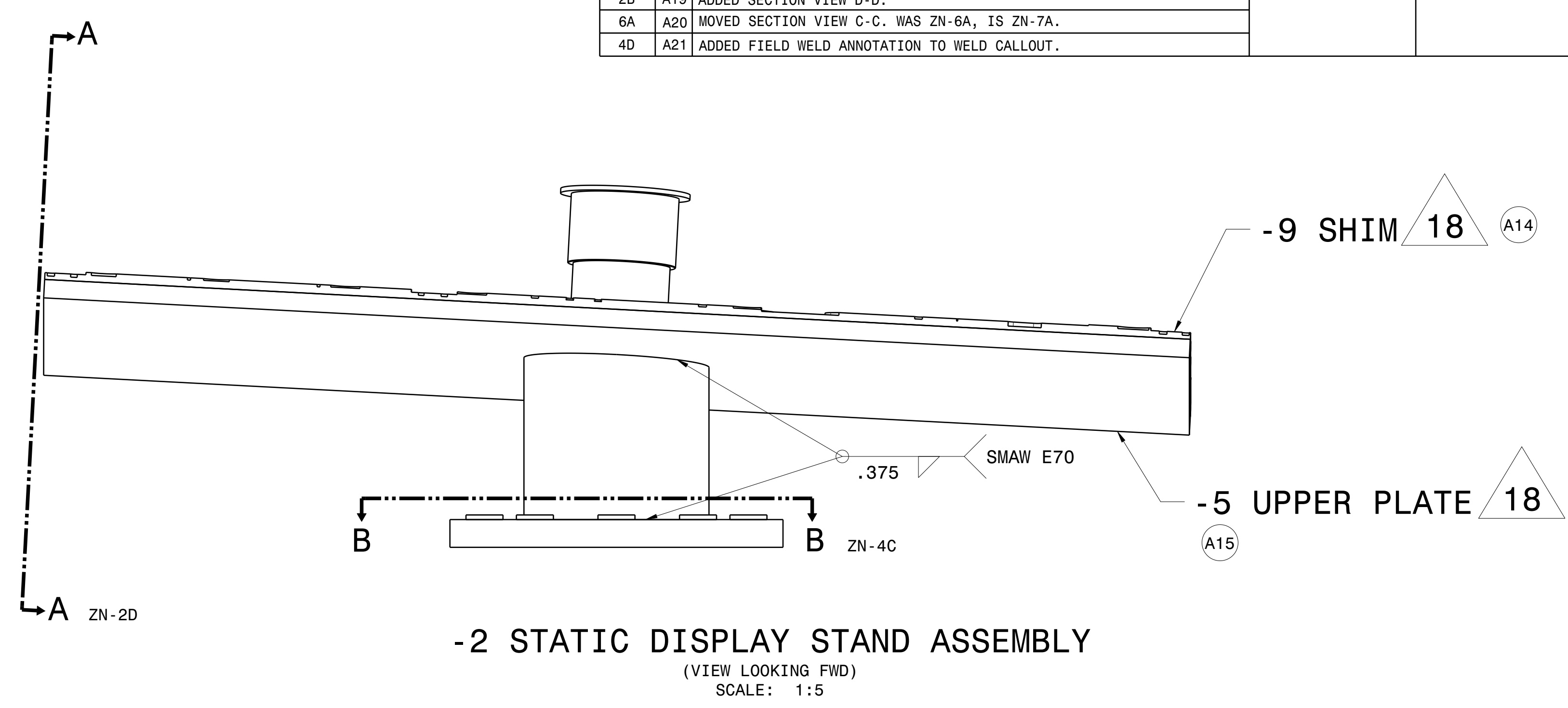
N/A SH-60F DSH
NEXT ASSY USED ON CONTR
APPLICATION CONTR NO.

SIZE E CAGE CODE 96916 DWG NO. 22E2946
SCALE NONE REF SHEET 1 OF 4

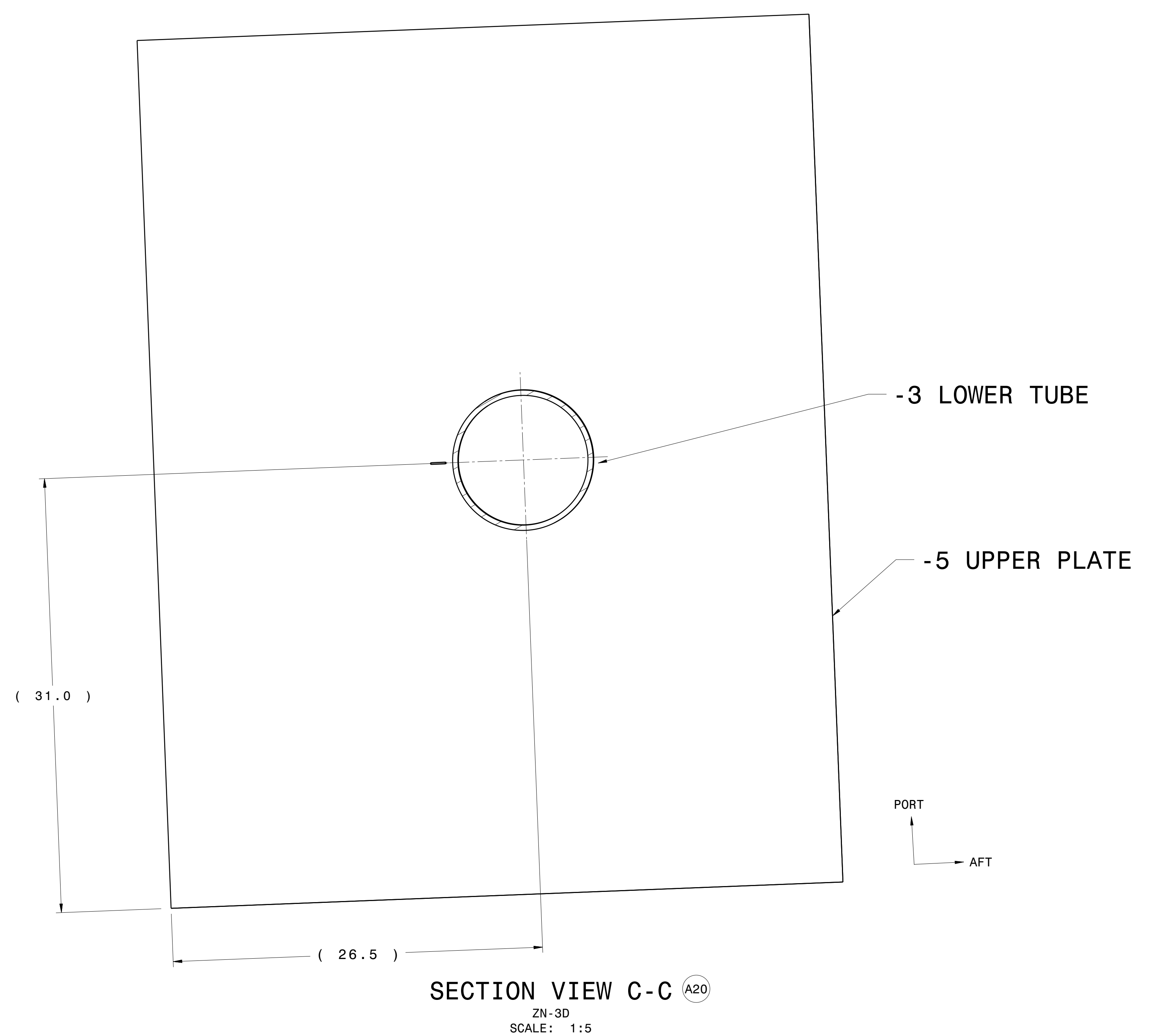
REVISION HISTORY			CHECKED	APPROVED
ZONE	REV	DESCRIPTION		
5G	A12	UPDATED PART NUMBER CALLOUT. WAS -5 UPPER PLATE, IS -9 SHIM.		
2E	A13	DELETED WELD CALLOUT FROM SECTION VIEW A-A.		
1G	A14	ADDED CALLOUT "-9 SHIM" AND DELTA NOTE 18.		
1F	A15	ADDED CALLOUT "-5 UPPER PLATE" AND DELTA NOTE 18.		
5H	A16	ADDED DELTA NOTE 19.		
4C	A17	MOVED SECTION VIEW B-B. WAS ZN-2D, IS ZN-4C.		
1D	A18	MOVED SECTION VIEW A-A. WAS ZN-2B, IS ZN-2D.		
2B	A19	ADDED SECTION VIEW D-D.		
6A	A20	MOVED SECTION VIEW C-C. WAS ZN-6A, IS ZN-7A.		
4D	A21	ADDED FIELD WELD ANNOTATION TO WELD CALLOUT.		



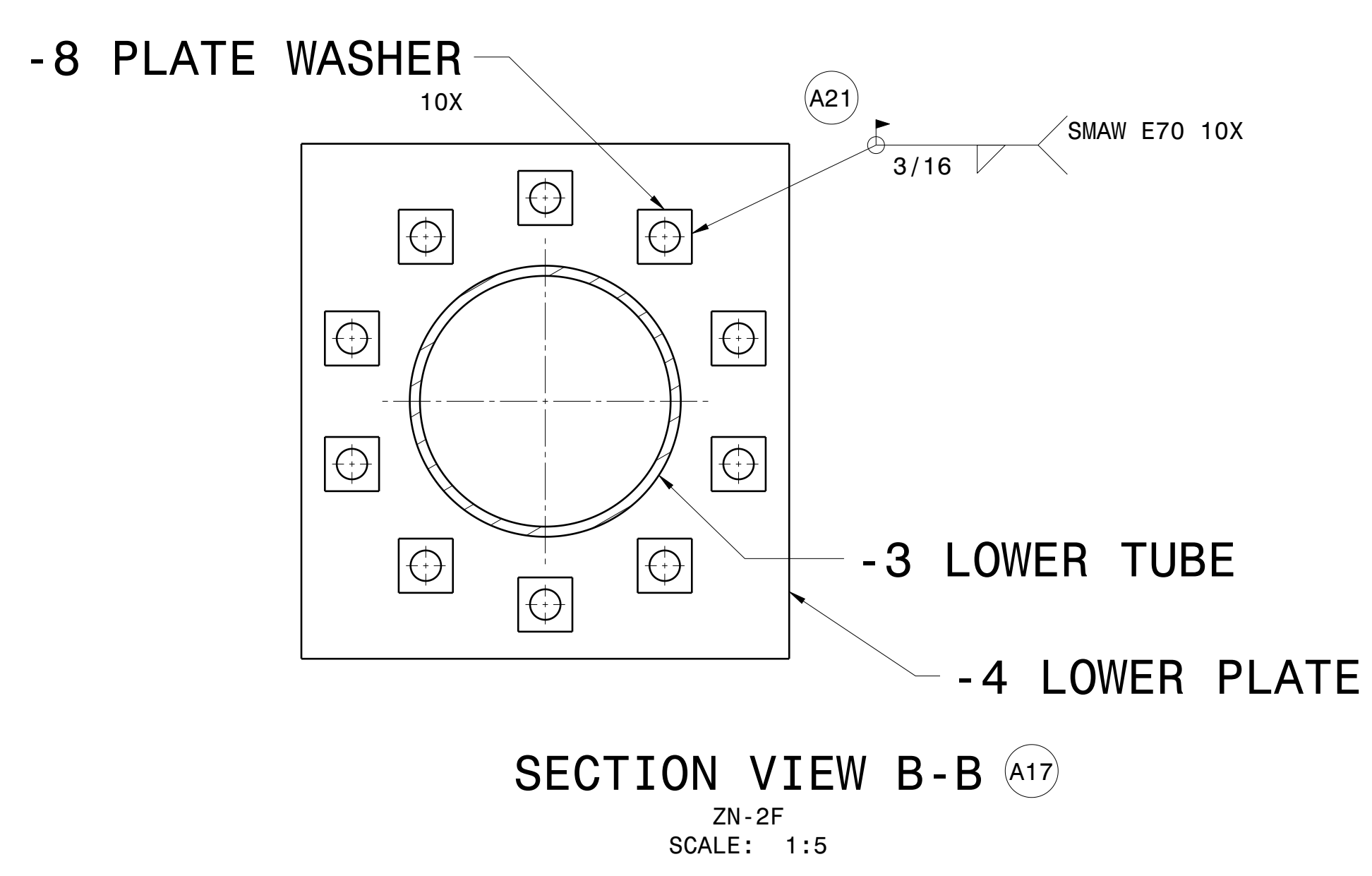
-1 STATIC DISPLAY STAND INSTL
(VIEW LOOKING DOWN - AIRCRAFT NOT SHOWN)
SCALE: 1:5



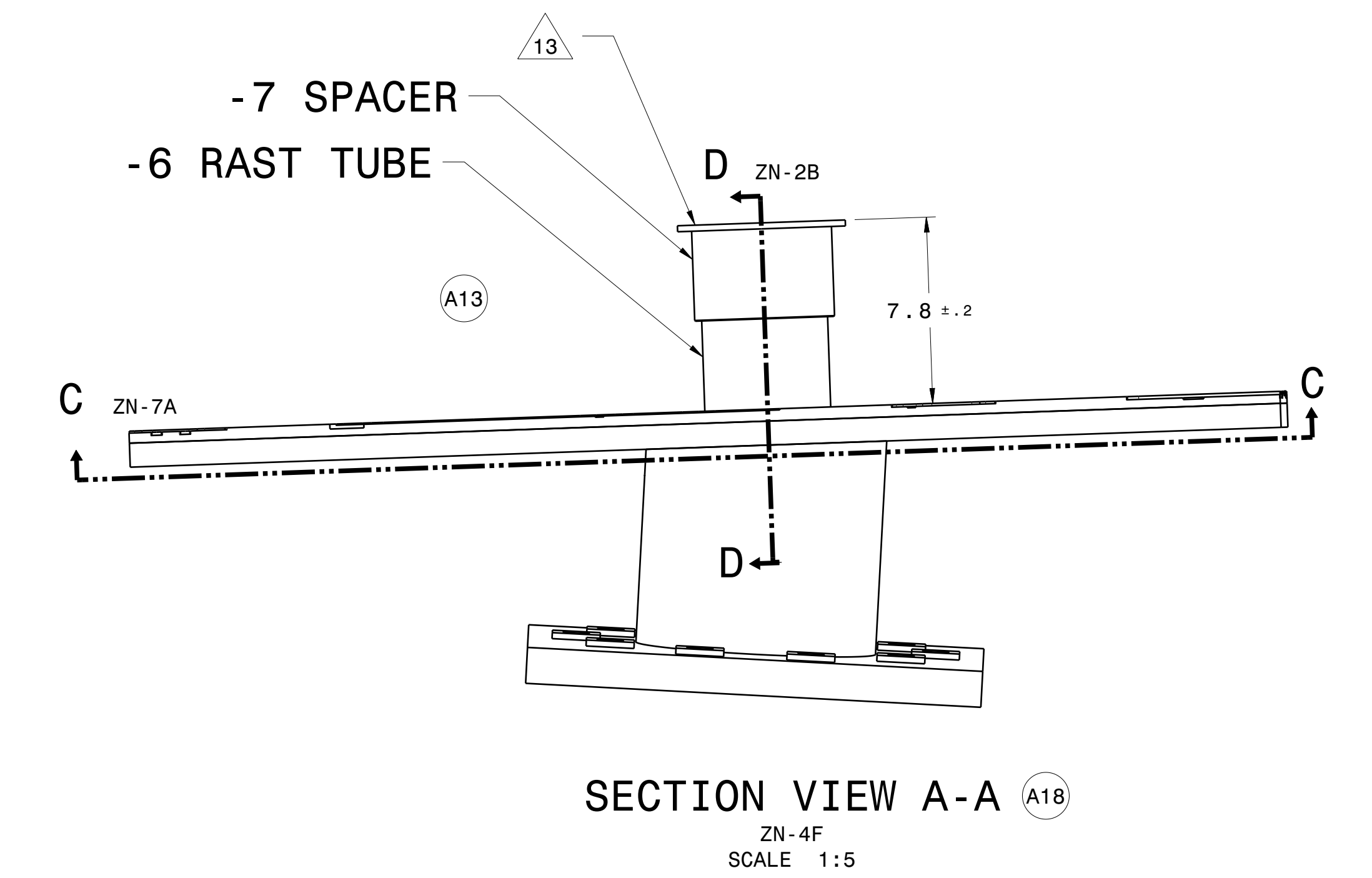
-2 STATIC DISPLAY STAND ASSEMBLY
(VIEW LOOKING FWD)
SCALE: 1:5



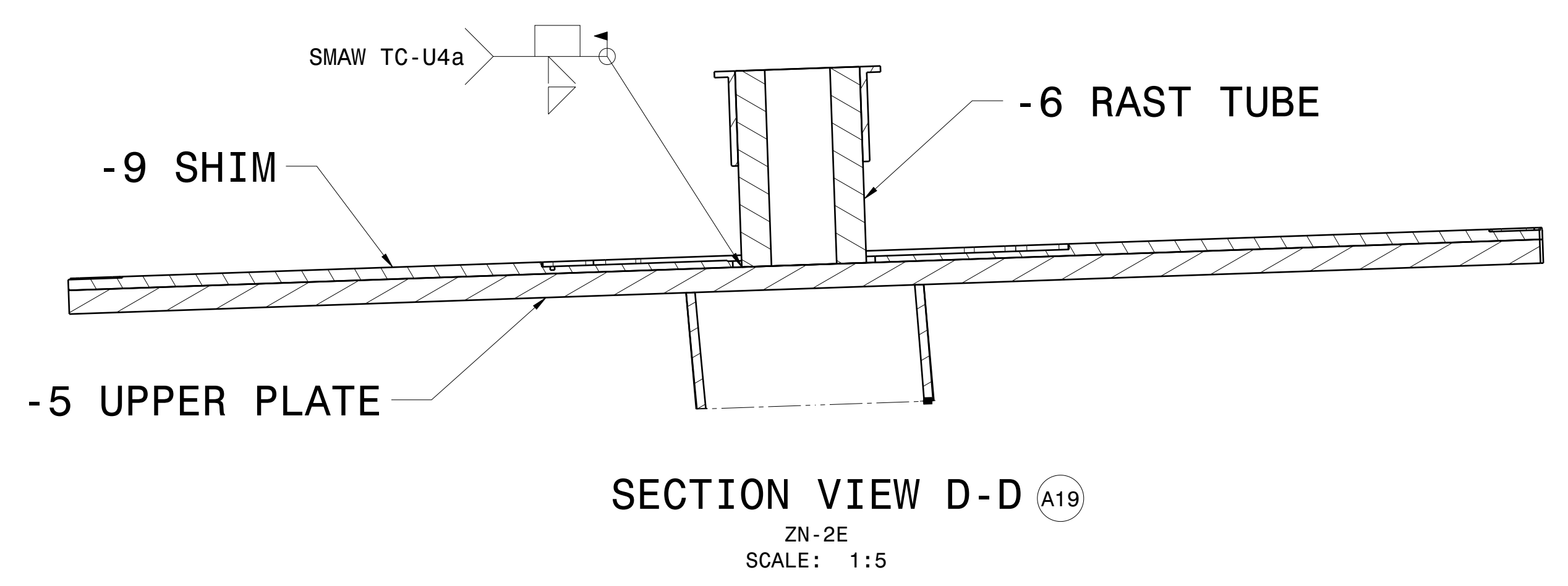
SECTION VIEW C-C
ZN-3D
SCALE: 1:5



SECTION VIEW B-B
ZN-2F
SCALE: 1:5



SECTION VIEW A-A
ZN-4F
SCALE: 1:5



SECTION VIEW D-D
ZN-2E
SCALE: 1:5

SEE SHEET 1 FOR NOTES AND PARTS LIST

DISTRIBUTION STATEMENT D - DISTRIBUTION AUTHORIZED TO DEPARTMENT OF DEFENSE AND U.S. DOD CONTRACTORS ONLY DUE TO CRITICAL TECHNOLOGY, DETERMINED ON 16 JUNE, 2015. OTHER REQUESTS FOR THIS DOCUMENT SHALL BE REFERRED TO COMMANDING OFFICER, FLEET READINESS CENTER EAST MARINE CORPS AIR STATION, CHERRY POINT, NC 28533

FILE NO.: Z:/FST-DATA-114.014.014.S/ENGINEERING DRAWINGS/REL 1H-80/22E2946

DRAIN	A. MCCALLISTER	11-8-23	SIZE	E	CAGE CODE	DWG NO.	REV
CHECKED	K. MURPHY	11-8-23			96916	22E2946	A
APPROVED	W. THORNTON	11-8-23					

FLEET READINESS CENTER - EAST
U.S. MARINE CORPS AIR STATION
CHERRY POINT, NC

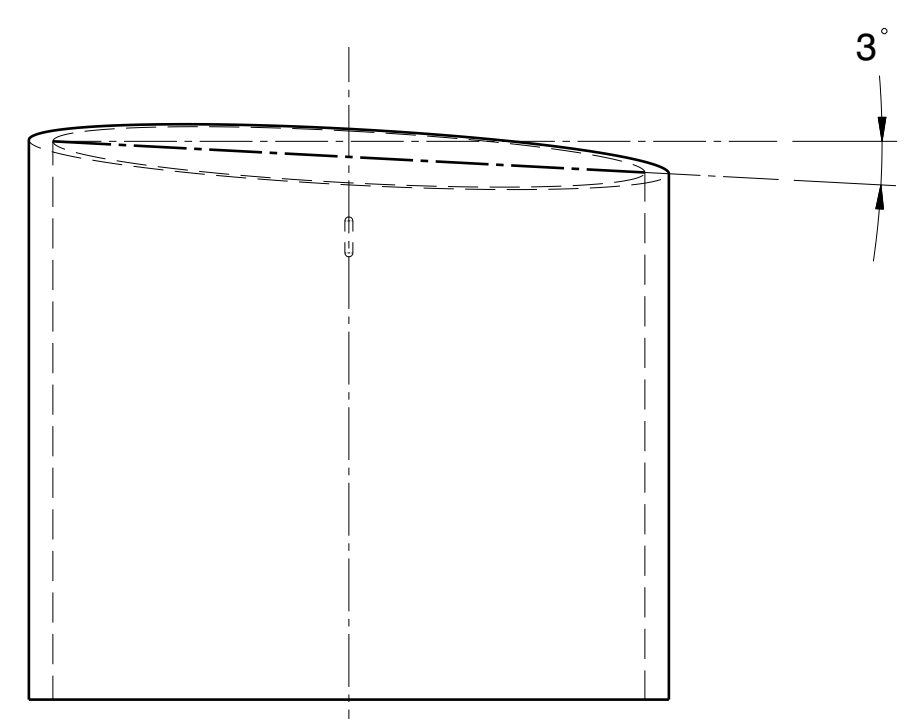
SCALE: NONE REF SHEET 2

DWG NO.: 22E2946

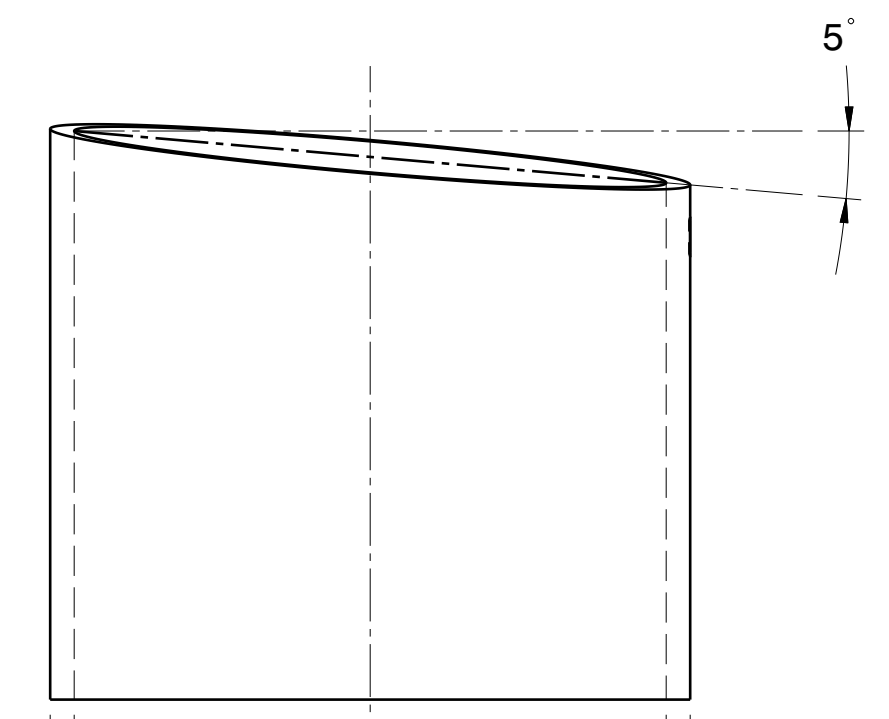
SHEET 2

REV A

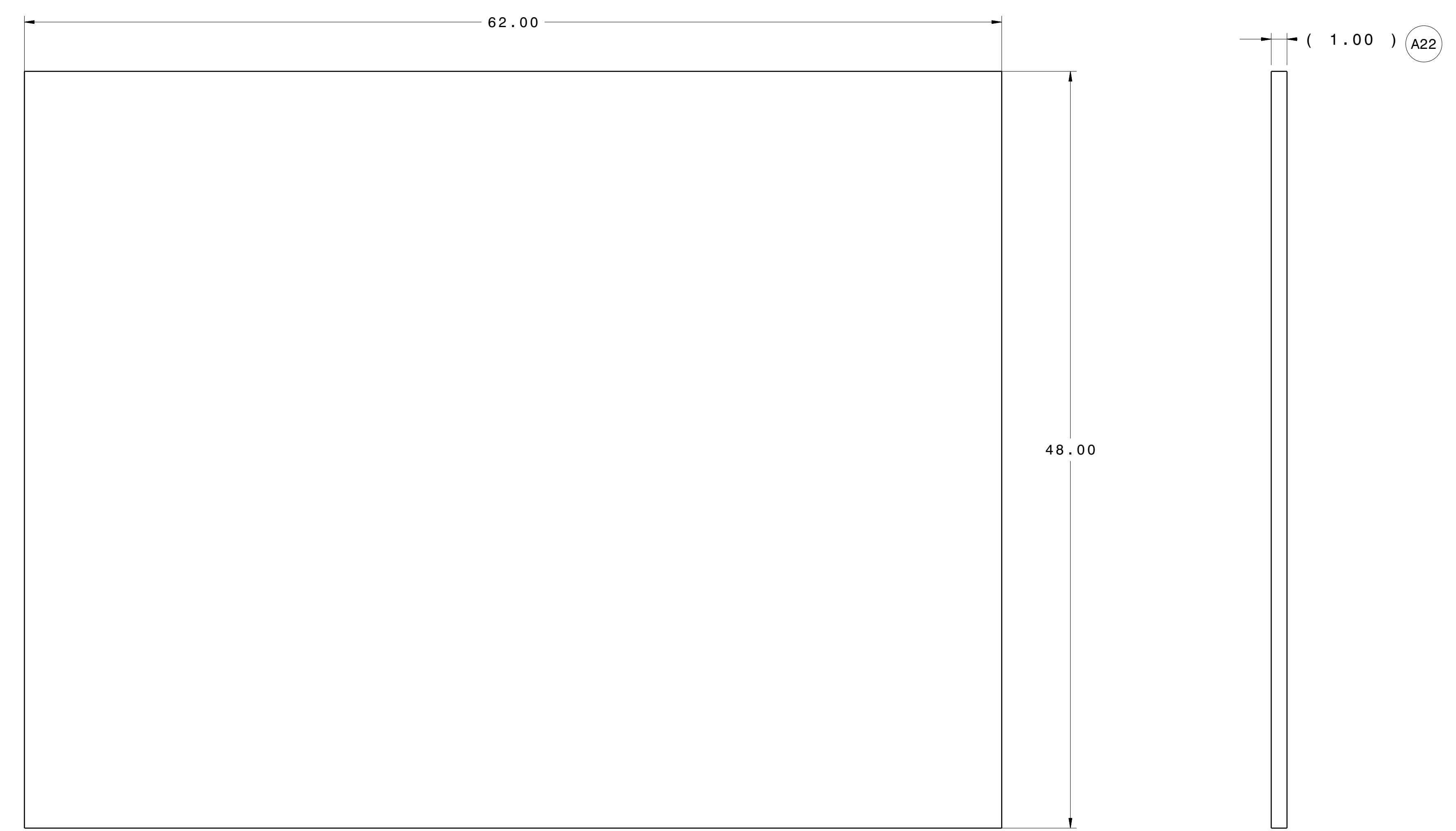
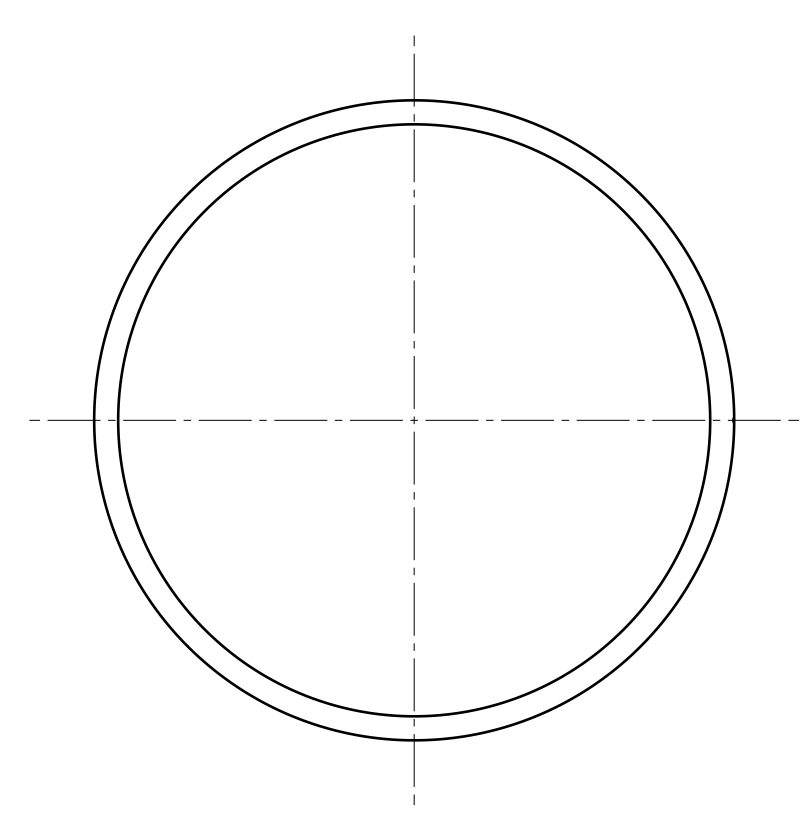
ZONE		REV	DESCRIPTION	CHECKED	APPROVED
1G	A22		CHANGED THICKNESS DIMENSION. WAS 1.25, IS 1.00		
3E	A23		UPPER SURFACE GEOMETRY CHANGED FOR -5 UPPER PLATE.		
3B	A24		CHANGED HOLE DIAMETER. WAS 1.125, IS 1.250		
6D	A25		DELETED DELTA NOTE 14.		
5C	A26		CHANGED DIMENSION. WAS 8.00, IS 8.27		



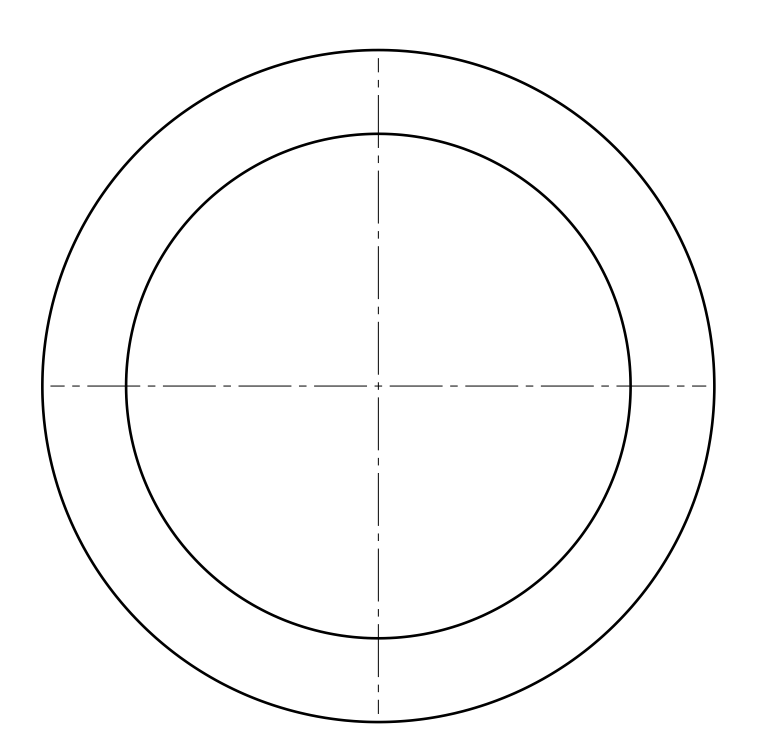
-3 LOWER TUBE
SCALE: 1:3



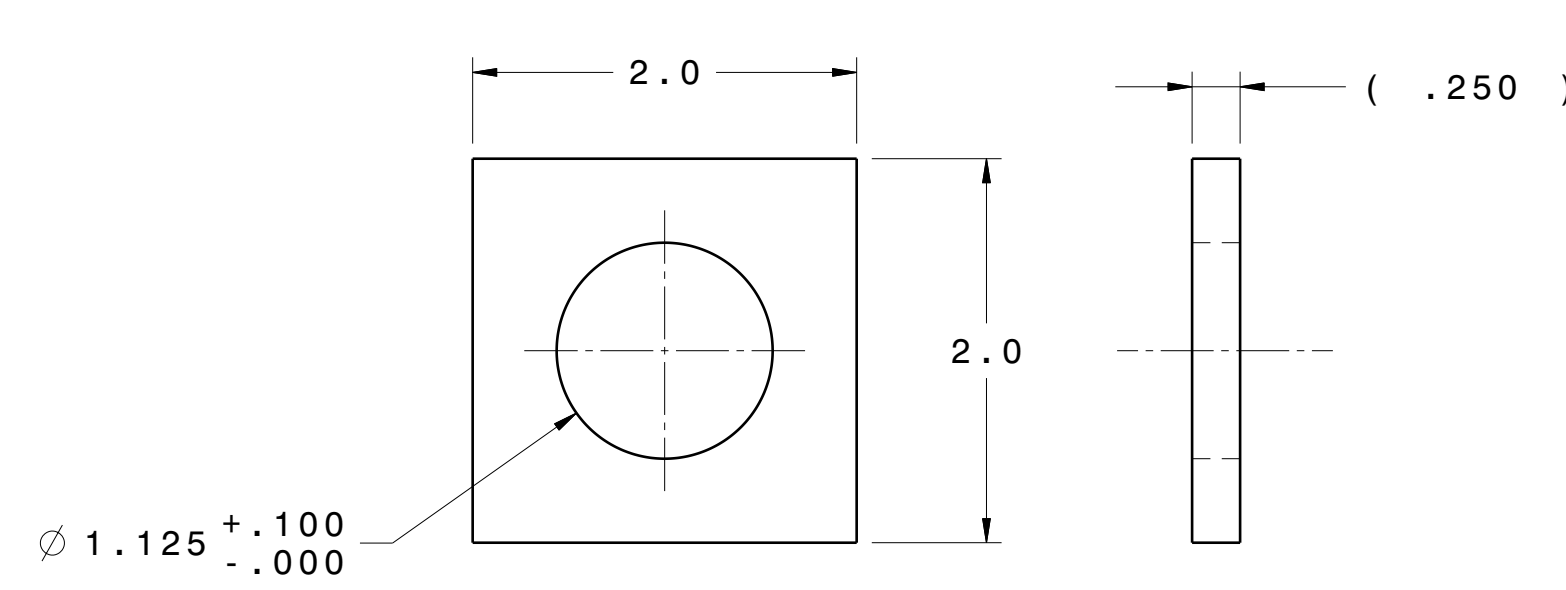
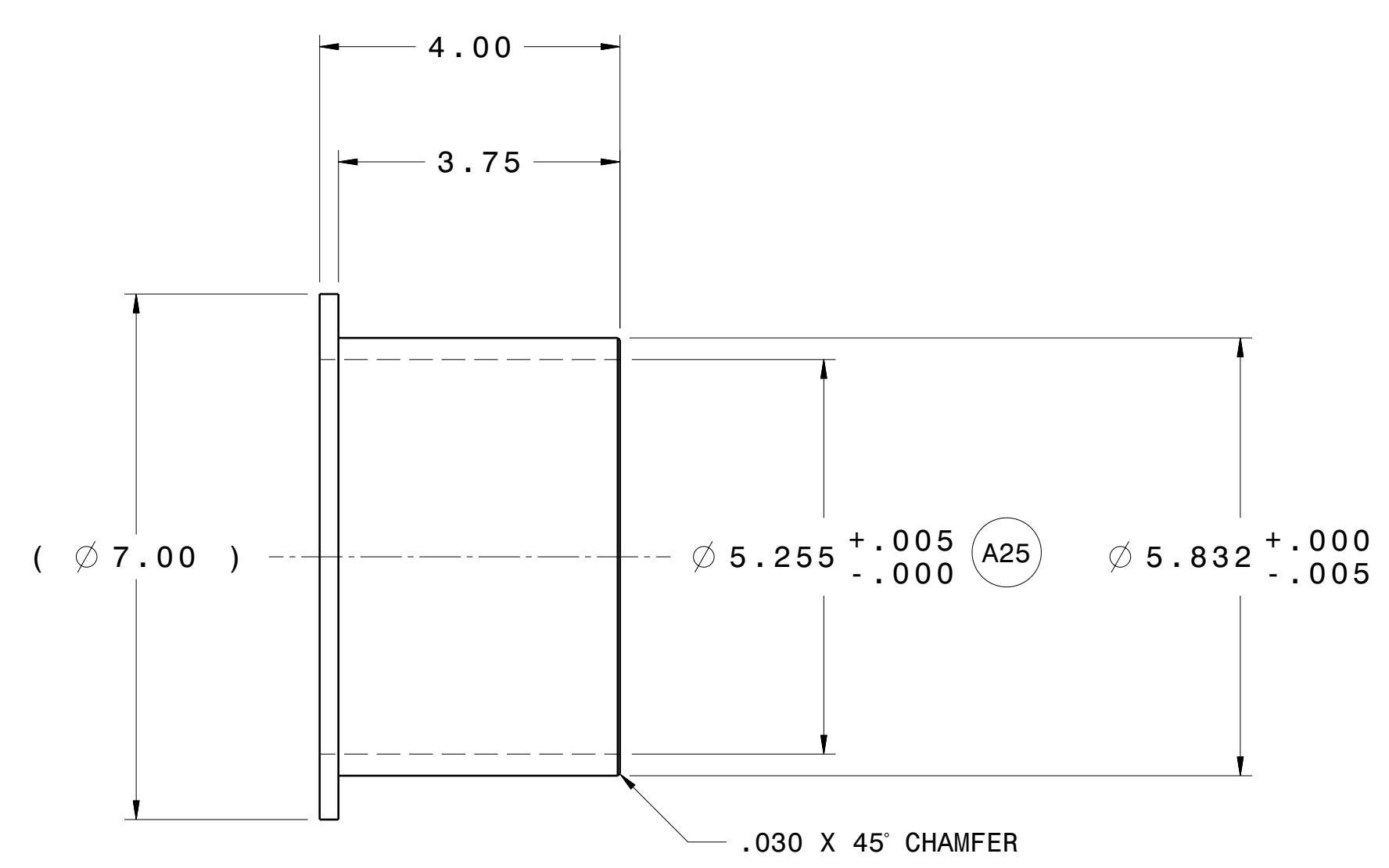
(9.25)
(10.00)



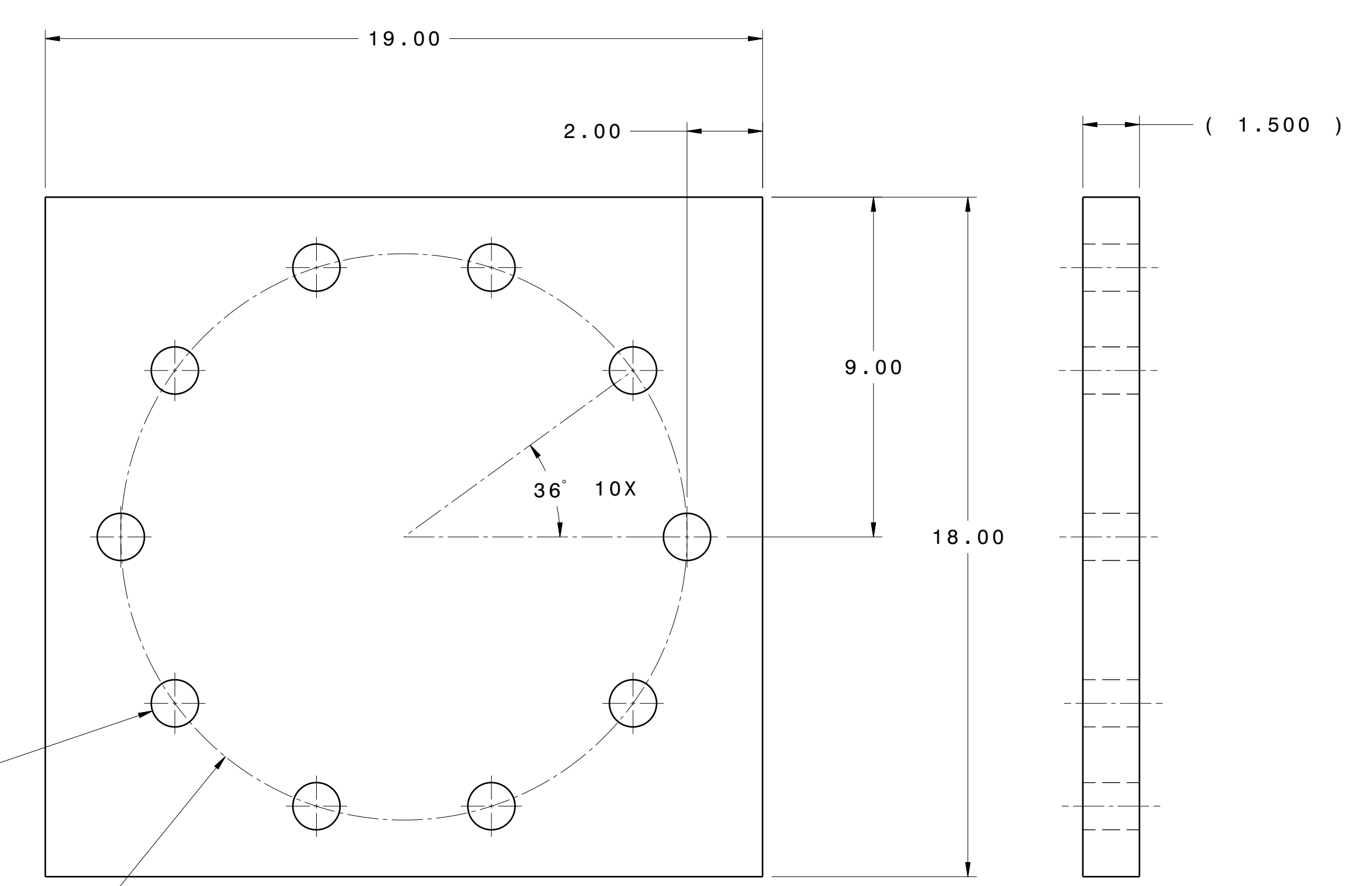
-5 UPPER PLATE (A23)
SCALE: 1:5



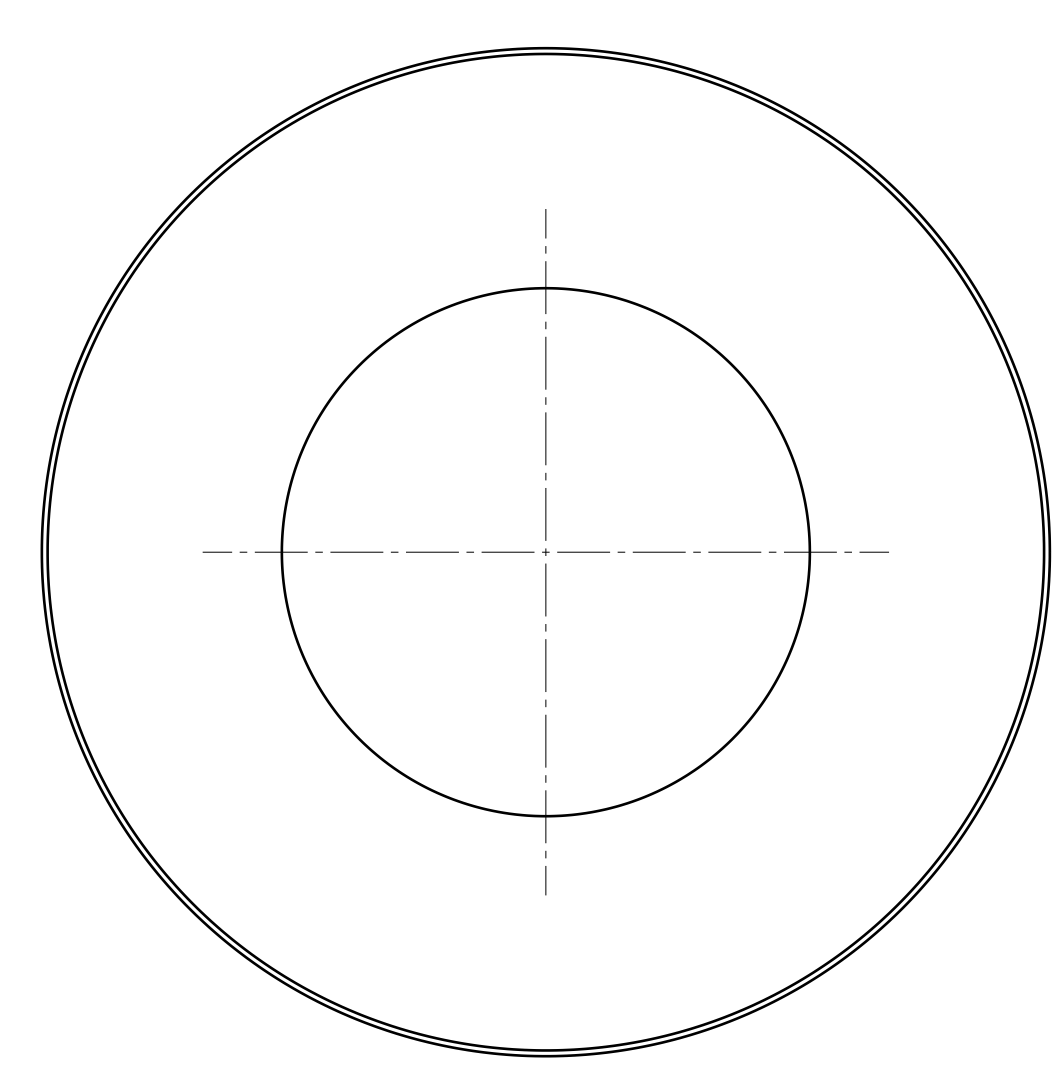
-7 SPACER 17
SCALE: 1:2



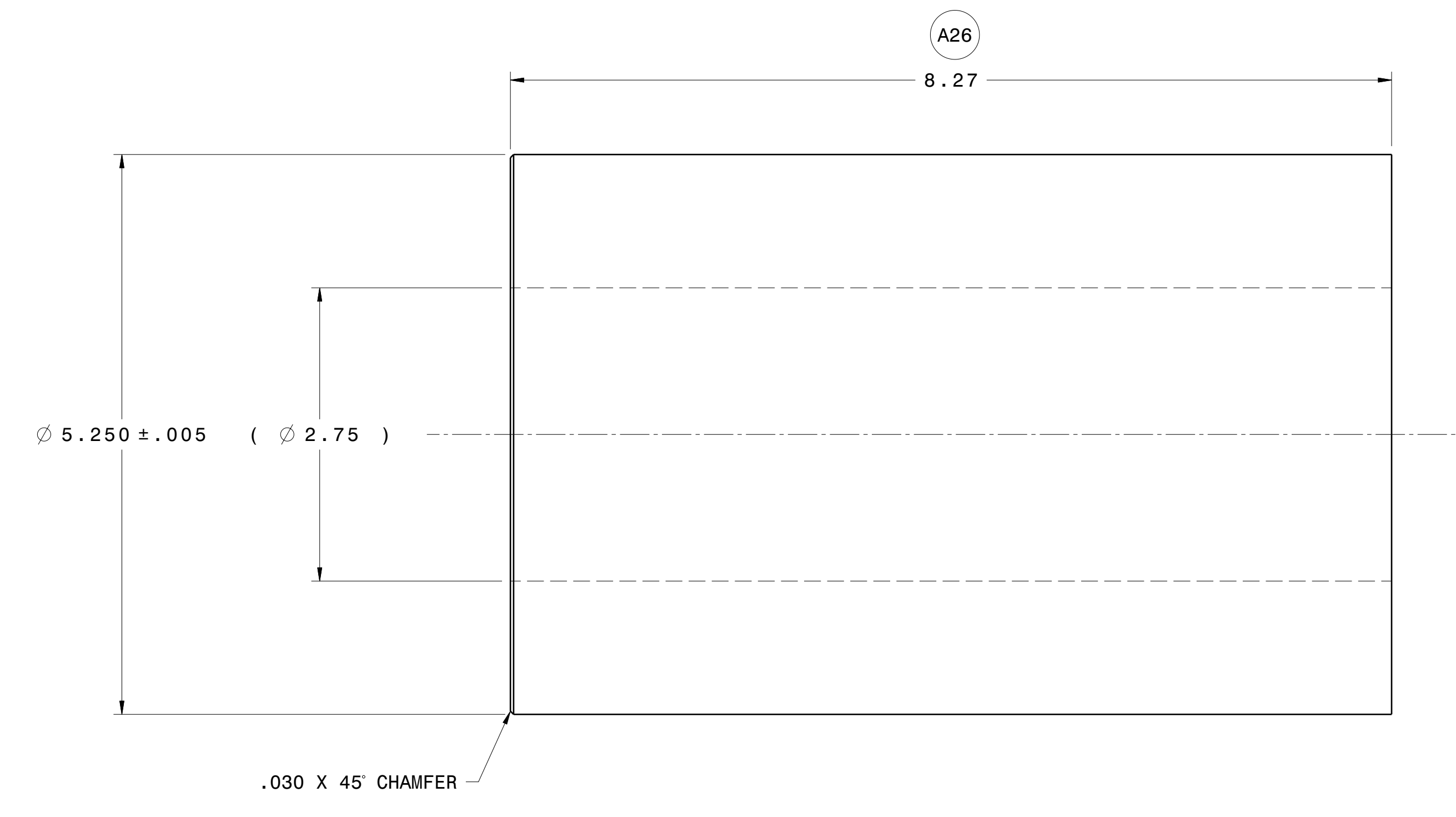
-8 PLATE WASHER
SCALE: 1:1



-4 LOWER PLATE
SCALE: 1:3



-6 RAST TUBE 16
SCALE: 1:1



DISTRIBUTION STATEMENT D - DISTRIBUTION AUTHORIZED TO DEPARTMENT OF DEFENSE AND U.S. DOD CONTRACTORS ONLY DUE TO CRITICAL TECHNOLOGY, DETERMINED ON 16 JUNE, 2015. OTHER REQUESTS FOR THIS DOCUMENT SHALL BE REFERRED TO COMMANDING OFFICER, FLEET READINESS CENTER EAST MARINE CORPS AIR STATION, CHERRY POINT, NC 28533

SEE SHEET 1 FOR NOTES AND PARTS LIST

DRAWN	A. MCCALLISTER	11-8-23	SIZE	E	CAGE CODE	96916	DWG NO.	22E2946	REV	A
CHECKED	K. MURPHY	11-8-23	SCALE	NONE	REF		SHEET	3		
APPROVED	W. THORNTON	11-8-23								

8

7

6

5

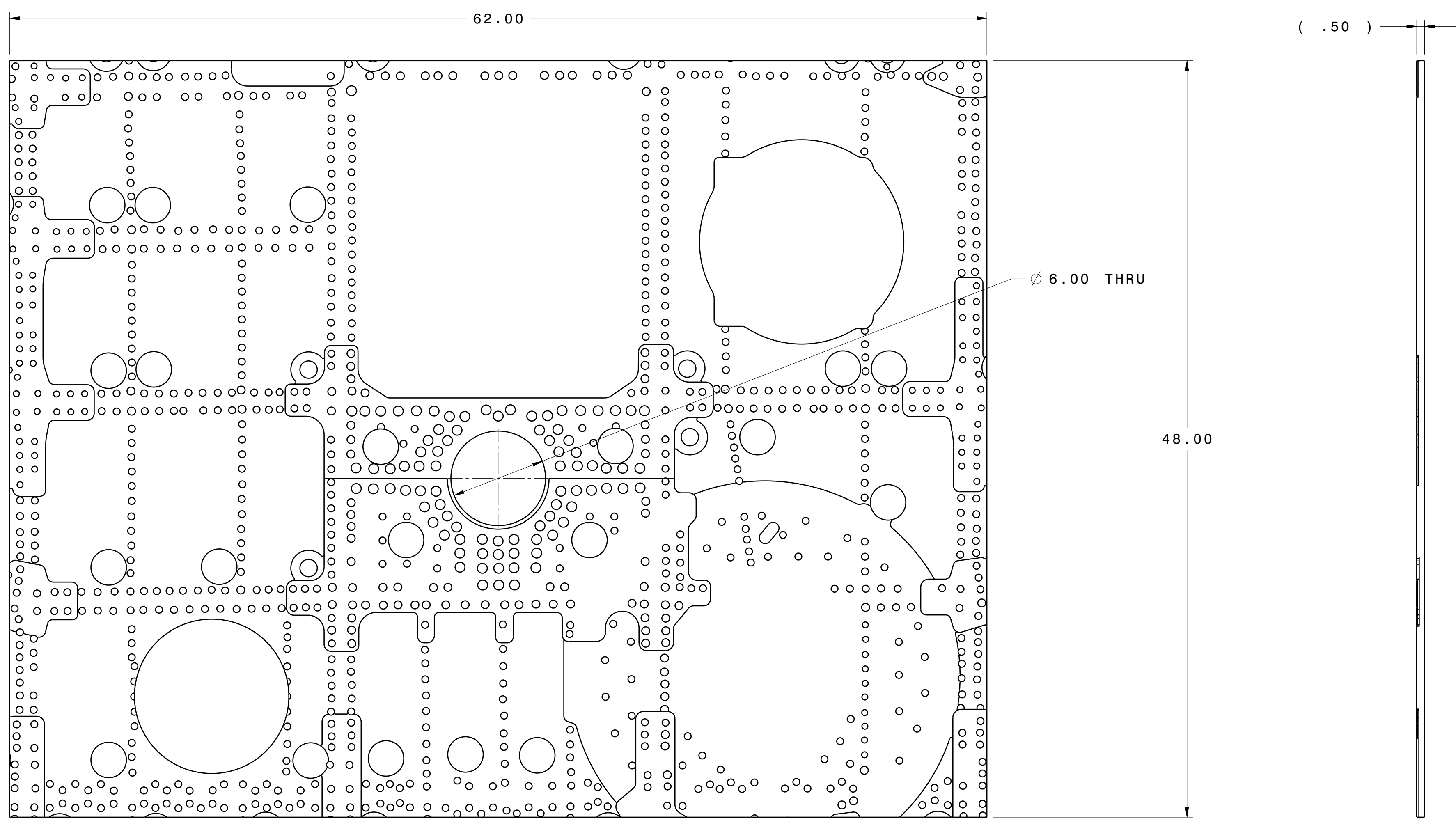
4

3

2

1

REVISION HISTORY			
ZONE	REV	DESCRIPTION	APPROVED



-9 SHIM
SCALE: 1:5

H
G
F
E
D
C
B
A

H
G
F
E
D
C
B
A

REV -
SH 4
DWG NO. 22E2946

SEE SHEET 1 FOR NOTES AND PARTS LIST

DISTRIBUTION STATEMENT D - DISTRIBUTION AUTHORIZED TO DEPARTMENT OF DEFENSE AND U.S. DOD CONTRACTORS ONLY DUE TO CRITICAL TECHNOLOGY, DETERMINED ON 16 JUNE, 2015. OTHER REQUESTS FOR THIS DOCUMENT SHALL BE REFERRED TO COMMANDING OFFICER, FLEET READINESS CENTER EAST MARINE CORPS AIR STATION, CHERRY POINT, NC 28533

DRAWN	A. MCCALLISTER	2-16-24	SIZE	E	CAGE CODE	96916	DWG NO.	22E2946	REV	-
CHECKED			SCALE	NONE	REF		SHEET	4		

FILE NO.: Z:/FST-DATA-114.014.SI/ENGINEERING DRAWINGS/REL1H-80/22E2946

8

7

6

5

4

3

2

1